

DESTINATION *in-person* Return to School

For Information and Updates

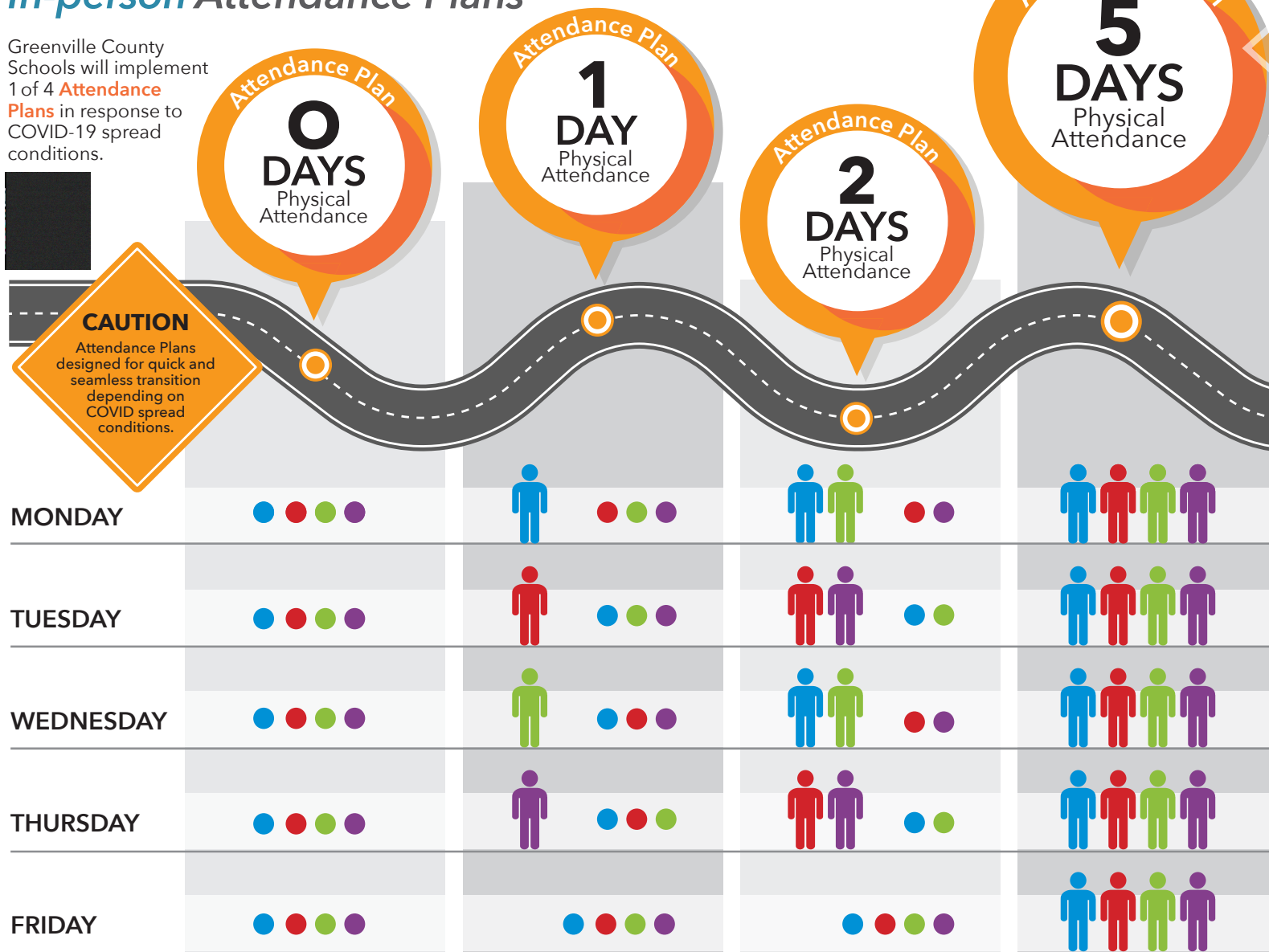
Visit our [Return to In-person School Resource Page](http://tiny.cc/ReturnToSchool) | <http://tiny.cc/ReturnToSchool>

For **Virtual Program** information visit | <http://tiny.cc/VirtualProgram>

For Information on Current COVID-19 Spread visit SCDHEC.gov

In-person Attendance Plans

Greenville County Schools will implement 1 of 4 **Attendance Plans** in response to COVID-19 spread conditions.



THE ULTIMATE GOAL is to safely return students and teachers to the 5-day in-person option.

Student Groups

ONE Day Attendance:

(First Letter of Last Name)

Blue A-D	Red E-K
Green L-Q	Purple R-Z

Student Groups

TWO Days Attendance:

(First Letter of Last Name)

Blue/Green A-D/L-Q
Red/Purple E-K/R-Z

Students choosing to attend school in-person will be assigned a color based on the **first letter of their last name**. For example, if a student's name is Maria Johnson, she will be color-coded as **RED** since all last names beginning with E-K will be assigned to the **RED** group. Maria will attend school on the days that have been assigned to **RED** students.

If your children have different last names, you should contact your child's principal(s) to request they move him or her to a different group so that both of your children attend school on the same day(s). For example, if you have a child named Maria Johnson (**RED**) and a child named Jerome Wilson (**PURPLE**), you may request that both children attend school on the same day (either **RED** or **PURPLE**).

= eLearning | eLearning provided by teacher on the days students NOT in physical attendance